



Lincoln Plaza, London, E14 9BN

**£365,000**



## Lincoln Plaza, London, E14 9BN

£365,000

Barrain London is pleased to present this light-filled one bedroom apartment set on the 17th floor of Duckman Tower just off Marsh Wall in Canary Wharf. Enjoy great balcony views over the Greenwich Observatory and, just outside your door, a vast multiplicity of restaurants, bars, and shopping options!

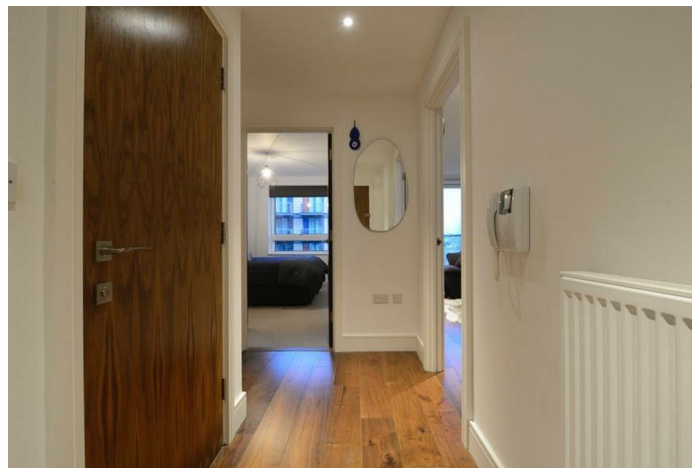
This property comprises a generously sized double bedroom with storage, and a stylish open plan reception-diner with a modern integrated kitchen leading onto the private balcony with amazing views of London's cityscape. Duckman Tower residents benefit from a 24hr concierge and residents winter garden.

Commuters will welcome the convenience of being just a 2 minute walk from South Quay DLR station, so they may get up a few minutes late but still arrive- to work on time. Everyone will appreciate the benefits of being just a 10 minute walk to amazing, exciting Canary Wharf. There, Elizabeth and Jubilee line connections provide very fast transport to Theatreland in the West End, shopping in Stratford, or, indeed, to almost any destination in Greater London -- including Heathrow Airport.

This is a great flat in a fantastic location at a great price. Please call to arrange your private viewing.

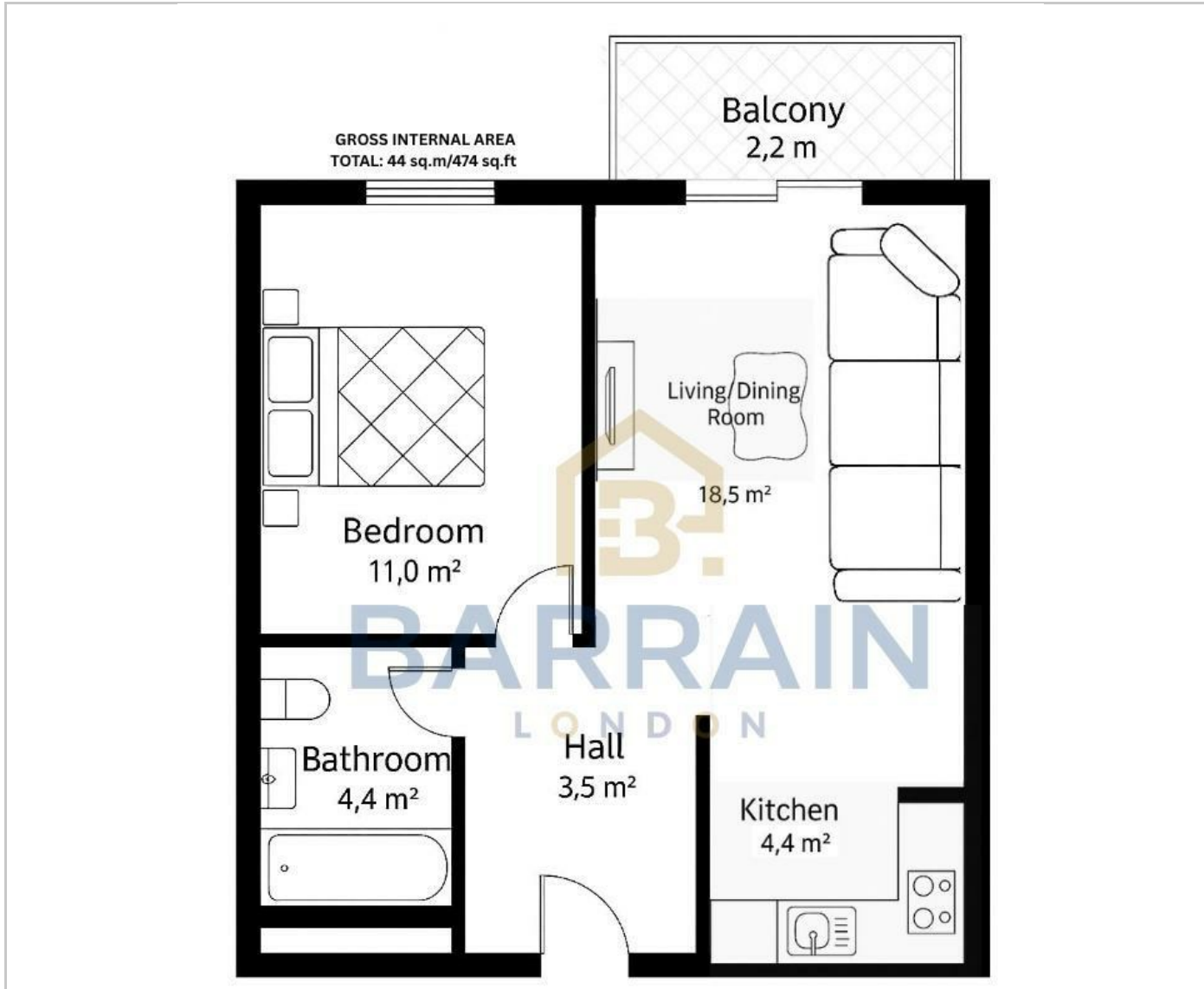
## Key Features

- 17th Floor with excellent views of the Greenwich Observatory
- 24/7 Concierge
- 2 minute walk to South Quay DLR station
- 10 minute Walk to Canary Wharf (Jubilee and Elizabeth Lines)
- Outside your door: diverse restaurant, pub & shopping options, Tesco, ASDA Superstore
- Communal winter garden

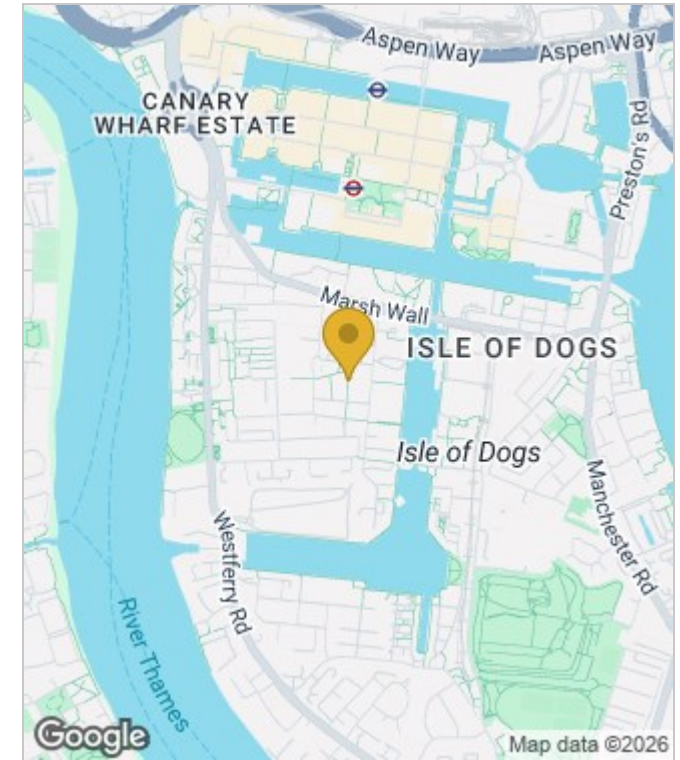


Council Tax Band: D

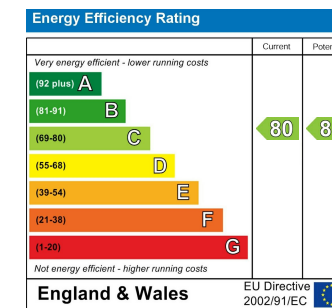
## Floor Plans



## Area Map



## Energy Performance Graph



These particulars, whilst believed to be accurate are set out as a general outline only for guidance and do not constitute any part of an offer or contract. Intending purchasers should not rely on them as statements of representation of fact, but must satisfy themselves by inspection or otherwise as to their accuracy. No person in this firm's employment has the authority to make or give any representation or warranty in respect of the property.